

COND TROL

Strong in Innovation. Design. Production.



2021

PROFESSIONAL PROGRAM

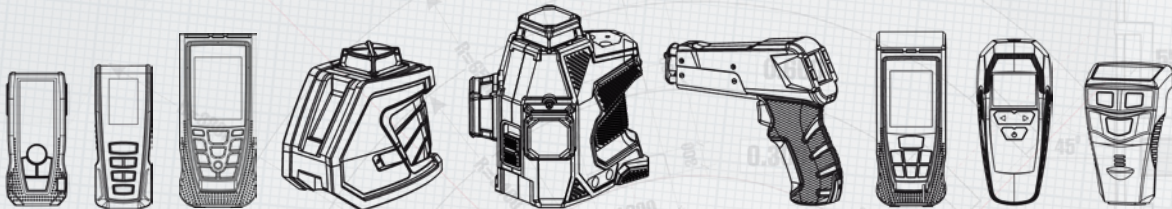


CONDROL was founded in 2003, designing, distributing construction instruments, providing OEM (original equipment manufacturing) and ODM (original design manufacturing) solutions.

With more than 15 years of experience in design and manufacturing, the company specializes in producing cross line laser levels, laser distance meters and non-destructive testing instruments such as concrete testers, wall scanners, moisture meters, etc.



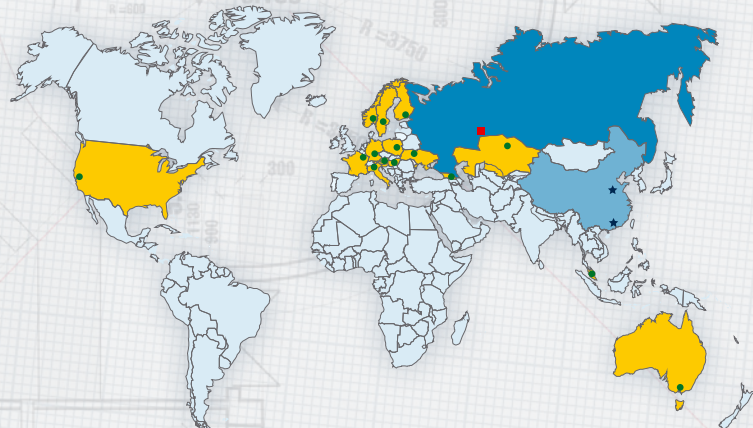
All these years CONDROL's R&D is continuously developing construction instruments and patenting solutions, products, concepts applied in it's products.



CONDROL is continuously expanding distribution network and looking for country distributors world wide. OEM products developed by CONDROL are already on the market in USA, Europe, Australia.

CONDROL offers OEM services, providing 'One-Stop' solutions for research and development, electronics and mechanical design services, plastic mold design and making, production engineering, quality control, material supply chain and logistics services to our customers.

- ● OEM customers
- ★ Production facility
- ■ R&D





CONDROL has developed several virtual devices for iPhone. These applications can be found easily in AppStore, searching by keywords or visiting relevant sections. They can be downloaded for free, they help the user to understand the principle of operation, to assess the importance and indispensability of each device.



You may download Condrol Xliner App by following link:
<http://condtrol.com/apps/xliner/>



You may download Condrol I-Tronix App by following link:
<http://condtrol.com/apps/itronix/>



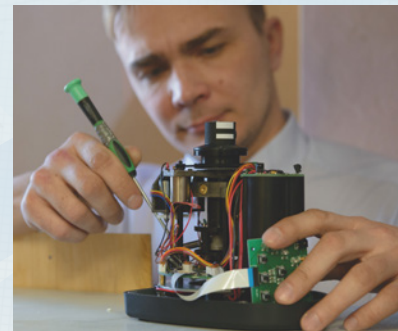
You can download the SMART MEASURE App on Google Play.



Warranty and Service

We acknowledge that accuracy and reliability is our top priority. As an expression of confidence of our products quality we offer a 2-year warranty for laser levels and laser distance meters to our customers. In warranty case your instrument will be repaired free of charge at CONDROL service center. Our qualified personnel will take care of the instrument and repair it quickly or provide a new one.

In addition to all warranty works, CONDROL service centers gave a good account of themselves in post warranty maintenance.





Professional Laser Distance Meter VECTOR series



Bluetooth
6800X200



SPECIFICATIONS	Vector 60	Vector 80
Measuring range	0.05-60 m	0.05-80 m
Accuracy	1.5 mm	1.5 mm

Functions

Length	•	•
Min/Max tracking	•	•
Areas	•	•
Volumes	•	•
Pythagoras	pro	pro
Addition/Subtraction	•	•
Displayed Values	4	4
Memory	•	•
Bluetooth	•	•
Tilt sensor	-	•
Point to point	-	•
IP54	-	•



Dimensions: 119x46x28 mm

Weight: 100 g

ALL LASER DISTANCE METER OF PROFESSIONAL series Vector differ from analogs by the following advanced features: built-in Li-ion battery, Bluetooth, internal memory, end-piece, fixation on a tripod.

CONDROL Vector 60 is a laser distance meter with a basic set of functions, designed to measure distance to 60 meters both indoors and outdoors. Ergonomic housing design, high measurement speed and backlit display ensure comfortable operation in any lighting conditions. Accuracy is just 1.5 mm.

CONDROL Vector 80 is a modern laser distance meter designed for quick and accurate measurement of distance up to 80m.

POINT-TO-POINT FUNCTION. The ability to measure the distance between two arbitrary points in space is achieved thanks to the built-in 3D accelerometer, which allows calculating the length of a segment passing through buildings or obstacles (wall, trees, fence) by just two measurements.

CALCULATION OF HORIZONTAL AND VERTICAL DISTANCE BY JUST ONE MEASUREMENT. Built-in tilt sensor allows calculating the horizontal and vertical distance from the laser distance meter to the object. For example, you can use this function to determine the height of a building and distance from the device to the object, even if there is an obstacle.

Standard package: laser distance meter, pouch, strap, charging cable, user manual.



Professional Laser Distance Meter VECTOR series



Vector 100 – is professional laser distance meter designed for fast and accurate distance measurement up to 100 m. Full-color high resolution display provides comfortable operation in any lighting conditions. The built-in 3D accelerometer helps to determine the distance between two arbitrary points in space, and the Bluetooth function together with the App CONDROL Smart Measure will significantly increase the

possibility of using this laser distance meter.

POINT-TO-POINT FUNCTION. One of the main advantages of the Vector 100 laser rangefinder is the ability to measure the distance between two arbitrary points in space. This is achieved thanks to the built-in 3D accelerometer, which allows determining the length of a segment passing through buildings or obstacles (wall, trees, fence) using just two measurements.

WALL SURFACE FUNCTION. With this function, the laser distance meter will quickly calculate the total area of the walls, which allows to estimate the quantity of materials for repair (wallpaper, putty). To do this, you need to measure the height first, and then the length of all the walls. The laser distance meter itself adds up the obtained areas and shows them on an accrual basis.

CALCULATION OF HORIZONTAL AND VERTICAL DISTANCE BY JUST ONE MEASUREMENT. Built-in tilt sensor allows calculating the horizontal and vertical distance from the laser distance meter to the object. For example, you can use this function to determine the height of a building and distance from the device to the object, even if there is an obstacle.

DIGITAL VIAL. It can be used to check the slope of the roadway, levelness of existing floors or when installing furniture.

Standard package: laser distance meter, pouch, strap, charging cable, user manual.

SPECIFICATIONS	Vector 100
Measuring range	0.05-100 m
Accuracy	1.5 mm

Reference point

Rear	•
End-piece	•
Front	•
Tripod	•

Functions

Length	•
Min/Max tracking	•
Areas	•
Volumes	•
Pythagoras	pro
Addition/Subtraction	•
Displayed Values	4
Memory	•
Crosshair	•
Bluetooth	•
Tilt sensor	•
Point to point	•
IP54	•
Timer	•

Dimensions: 119x46x28 mm Weight: 100 g

Professional Laser Distance Meter XP series



XP3 Pro is a professional laser distance meter designed for both outdoor and indoor applications. CONDROL XP3 Pro has a large set of calculating functions, a bright display and built-in Bluetooth, which allows to work with the CONDROL Smart Measure application.

POINT-TO-POINT FUNCTION is a distinctive feature of the laser distance meter CONDROL XP3 Pro, which allows to measure distance between two arbitrary points in space. This feature is achieved thanks to the integrated 3D accelerometer. By just two

measurements, the user can determine the length of the segment, even if this segment passes through buildings or obstacles (wall, trees, fence, etc.)

TRANSFER OF MEASUREMENTS VIA BLUETOOTH. Measurement results made by XP3 PRO can be transferred to a smartphone or tablet via Bluetooth. Just download free application CONDROL Smart Measure.

The application allows you to: store an unlimited number of measurements in the smartphone's memory, take pictures of objects, rooms, decor, furniture and mark dimensions on them, make notes, comments, draw room plans with a dimensional grid, save and export files.

BUILT-IN TILT SENSOR. Thanks to built-in tilt sensor, laser distance meter can calculate the horizontal and vertical distance by just one measurement. For example, when it is necessary to measure distance to hard-to-reach objects while geodetic and construction works.

ACCUMULATOR BATTERY. Batteries of XP3 Pro are charged using USB cable included in the delivery package, in the same way as charging a cell phone. Optionally, NiMH rechargeable batteries included in the delivery package can be replaced with regular alkaline batteries.

CONDROL XP3 Green is equipped with a green laser, which is much brighter and better visible even in bright sunlight.

Standard package: meter, micro-USB cable, strap, pouch, user manual, color box.

SPECIFICATIONS	XP3 Pro	XP3 Green
Measuring range	0.05-120m	0.05-120m
Accuracy	1.5mm	1.5mm

Reference point

Rear	•	•
End-piece	•	•
Front	•	•
Tripod	•	•

Functions

Length	•	•
Min/Max tracking	•	•
Areas	•	•
Volumes	•	•
Pythagoras	pro	pro
Addition/Subtraction	•	•
Displayed Values	4	4
Memory	•	•
Point to point	•	•
Bluetooth	•	•
Tilt sensor	•	•
Stake out	•	•
IP54	•	•
Timer	•	•

Dimensions: 135x59x28 mm

Weight: 104 g



Professional Laser Distance Meter XP series



XP4 Pro – a new generation laser distance meter designed specifically for measuring long distance in bright sunlight and working in adverse weather conditions.

8X DIGITAL CAMERA. XP4 Pro is equipped with a 1.3 megapixel camera with 8x zoom. No other laser distance meter has this advantage. The camera allows you to “zoom in” the object for accurate aiming, so you can take measurements outside in any weather conditions at a distance up to 150 m. Even if the laser dot is not visible, the crosshairs on the display help to point to the target.

AREA OF TRIANGLE. The function of triangle area calculation is provided specially for rooms of complex shape (circle, polygon) and allows to divide such rooms into sectors and calculate their areas.

WALL SURFACE. Just measure the length, width and height of the room, the 3D model of the room with all the results including the wall surface, floor area, perimeter and volume of the room will appear on the screen of the device. Thus, the wall surface will be able to calculate required volume of paint, wallpaper and length of the plinth.

ACCUMULATOR BATTERY. You won't need to buy batteries for XP4 Pro. It is charged via a USB port from a regular car cigarette lighter or 220 Volt mains.

MEMORY WITH USB INTERFACE. With this function, you can save measured values and transfer them to other storage media through a USB port using a free program.

Standard package: meter, micro-USB cable, strap, pouch, user manual, color box.

Dimensions: 135x59x28 mm

Weight: 104 g

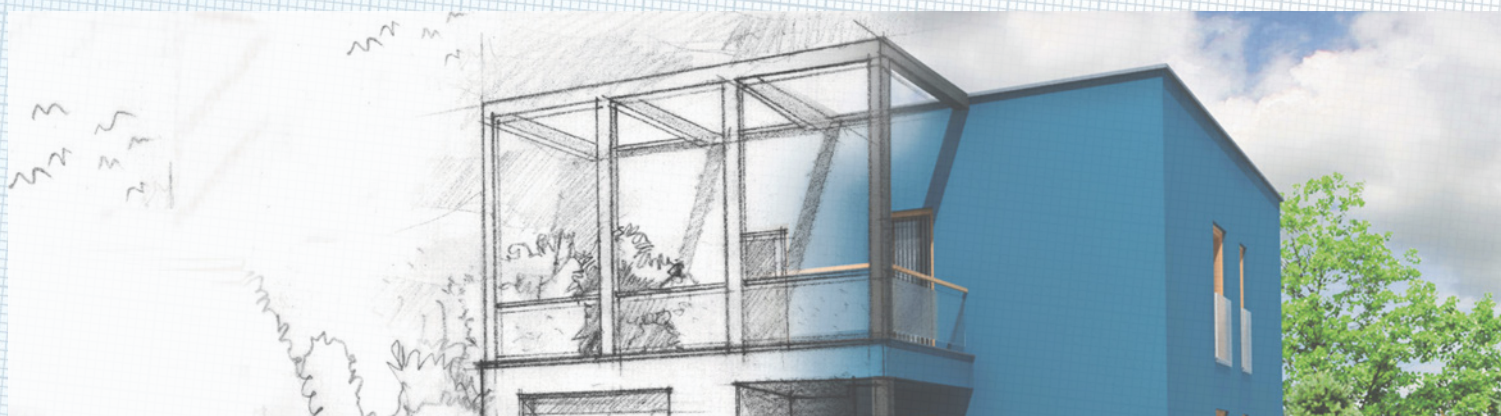
TECHNISCHE DATEN	XP4	XP4 PRO
Measuring range	0.05-100m	0.05-150m
Accuracy	1.5mm	1.5mm

Reference point

Rear	•	•
End-piece	•	•
Front	•	•
Tripod	•	•

Functions

Length	•	•
Min/Max tracking	•	•
Areas	•	•
Volumes	•	•
Pythagoras	pro	pro
Addition/Subtraction	•	•
Displayed Values	4	4
Memory	•	•
Crosshair	•	•
Digital viewfinder	•	•
Bluetooth	•	•
Tilt sensor	•	•
Stake out	•	•
IP54	•	•
Timer	•	•



Professional Laser Distance Meter Vector series

New generation of rangefinders with 6x zoom become even more compact and affordable.

EASY-TO-USE

This compact and lightweight meter operates just by 2 buttons. It is particularly easy to handle.

TILT SENSOR

Vector 1500 equipped with tilt sensor, it allows to measure angle and calculate horizontal and vertical distances by just one measurement.

APPLICATIONS

Vector series is perfect for road construction, telecom networks, data collection, landscaping, land management, natural resources management and forestry.

Standard package: meter, pouch, hand strap, 2xAAA batteries, user manual, color box.



Vector 600



Vector 1500



SPECIFICATIONS

	Vector 600	Vector 1500
Working range	600 m	1500 m
Accuracy	±1 m	±1 m
Angle range	60°	60°
Zoom	6x	6x
Objective caliber	25 mm	25 mm
Eyepiece caliber	3,8 mm	3,8 mm

Functions

Inclinometer	-	•
IP54	•	•
Battery	2xAAA	2xAAA
Dimensions / Weight	105x82x43 mm / 172 g	105x82x43 mm / 172 g



Laser rangefinder Ranger 3

Laser rangefinder with tilt sensor Ranger 3 allows to measure angle and distance up to 900m. It calculates horizontal and vertical distances by just one measurement. Ranger 3 is perfect for road construction, telecom networks, data collection, landscaping, land management, natural resources management and forestry. This compact and lightweight device is particularly easy to handle.

FEATURES

Fast and accurate measurements
6x zoom for detecting and tracking a moving target
Water/dustproof IP54
Ergonomic soft-grip case
Compact, pocket-sized, light-weight
Battery charge indicator
Standard package:
meter, batteries, pouch, hand strap,
cleaner, user manual, packed in color box.



SPECIFICATIONS	Ranger 3
Working range	900 m
Accuracy	±1 m
Angle range	60°
Zoom	6x
Objective caliber	25 mm
Eyepiece caliber	3,8 mm
Inclinometer	•
IP54	•
Battery	Li-ion battery
Dimensions / Weight	104x72x41 mm / 185 g



Industrial distance sensor IDS series

The Industrial Distance Sensor (IDS-series) measures absolute distances up to 50 meters without contact with a precision of 2 mm. The IDS can determine positions of objects that are difficult to access or may have very high surface temperatures. Just as well it can also measure distances in hostile environments, easy and accurate.

Electrical connection of the IDS is via a standard connector. A scalable analog output is available for measurement readings, securing a cost-efficient connection to any control system. The excellent price-performance ratio is another added bonus of the IDS-series.

SPECIFICATIONS	IDS 50
Measuring range	50 m
Accuracy	± 2 mm
Operating frequency	2 Hz
Working temperature	-20... +60 °C
Interface	RS-232 or RS-485
Housing	Metal case IP67
Laser	635nm, <1 mW, class II
Power supply	6-12 V DC
Dimensions/Weight	100x55x30 mm/ 280g



Cross Line Laser XLiner series

A NEW GENERATION OF XLINER CROSS LINE LASERS IS NOW EQUIPPED WITH A 360° HORIZONTAL LASER PLANE.

Two versions are available:

- **XLiner Combo 360** is a multifunctional cross and dot laser with 360° horizontal plane.

- **XLiner Duo 360** projects traditional cross laser plane, where horizontal plane is 360°.

BRIGHT LINES AND WORK WITH RECEIVER. A distinctive feature of XLiner series has always been increased brightness of the laser planes, which makes working with these cross line lasers more comfortable. To ensure outdoor works they have a pulse mode, which allows working at distance up to 60 m by using the original CONDROL laser receiver.

COMFORTABLE MARKING. XLiner Series cross line lasers make marking easier and more comfortable. Just set up the instrument at required height, the horizontal plane will be clearly visible all the way around the room.

PLUMB UP AND DOWN DOTS. A distinctive feature of XLiner Combo 360 is the plumb up and down dots which make it possible to transfer the points from the floor to the ceiling.

HIGH PROTECTION DEGREE. The XLiner series is designed with the internal metal frame, and has a protective bumper around the perimeter of the faces which should be appreciated by professionals working on the construction site. XLiner is reliably protected from impact, dust, dirt, splashes.

There is an anti-slip pad in the grip area.

MOUNTING OPTIONS. CONDROL XLiner Combo 360 is equipped with two types of threads, so it can be installed on all kinds of tripods and accessories used for mounting laser levels:

- 5/8" thread for mounting on a leveling pole with tripod or professional tripod with elevating head;

- 1/4" thread for installation on a common photographic tripod or CONDROL Krab and Wall Mount.

The laser level has a screw hole. It allows to fix the laser level on surfaces in which you can drive a nail or drill a screw, as well as a magnetic mount for fixing on metal surface.

Standard package:

XLiner Duo/Combo 360 laser, pouch, user manual, color box.

Working Range/ with Receiver, m: 20/60

Accuracy, mm/m: ± 0,2

Self-Leveling Range °: 5



Dimensions: 132x116x85 mm Weight: 445 g



PATENT





Cross Line Laser XLiner series

CONDROL XLiner 360 G - a new generation laser level, allowing to project horizontal plane with a 360° fan angle. The ability to project vertical, horizontal, crossline and inclined planes helps to solve a wide range of tasks: installation of partitions, wallpapering, tile laying, etc. Brightness of the green laser is 4 times higher than red one, which increases the efficiency of the laser level in bright sunlight.

GREEN LASER. XLiner 360 G is equipped with a 520 nm green laser, which is 4 times brighter than red one at the same power of emitter. This feature makes the laser level equally effective at both indoor and outdoor constructions sites.

PULSE MODE. For outdoor operation XLiner 360 G has a pulse mode, which allows to work at distance up to 100 m using the laser receiver by CONDROL.

HIGH PROTECTION RATE. Shock-resistant rubberized case, high protection against moisture, dust and dirt make it possible to use XLiner 360 G both indoors and at outdoor building sites at any time of the year.

TWO TYPES OF THREAD. Thanks to two types of thread (1/4" and 5/8"), the XLiner 360 G can be installed on all types of tripods, as well as on accessories designed for fixing laser levels.

TILT MODE. When the tilt mode is activated, self-leveling is not available, which allows to project the line at any angle specified by the user. This feature is indispensable when marking and installing staircases, corner elements of construction or decor. If you direct the emitter of the laser level down, you can project the supporting axis for laying of floor coverings, including tiles.

THANKS TO BUILT-IN BLUETOOTH and original CONDROL application, the user can control the laser level remotely using a smartphone or a tablet.

The application allows:

- select required mode of operation: switch on / off laser emitters, pulse mode;
- adjust the laser power to save the battery power;
- watch the battery charge level.

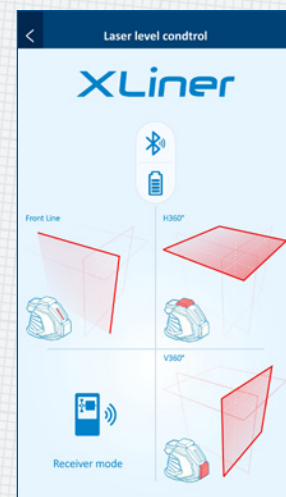
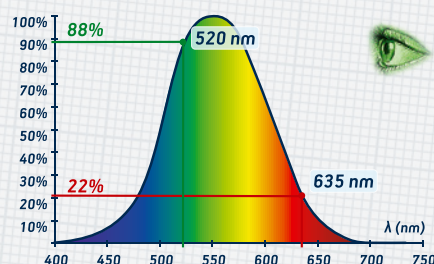
Standard package:

XLiner 360 G laser, pouch, user manual, color box.

Working Range/ with Receiver, m:	20/60
Accuracy, mm/m:	± 0,2
Self-Leveling Range °:	5



Dimensions: 132x116x85 mm Weight: 445 g



Cross Line Laser XLiner series

XLiner Pento 360 – a high-precision laser level, Equipped with 3 laser emitters with increased power providing 3D scanning.

FUNCTIONAL MOUNT. In addition to mounting on a tripod 5/8" and 1/4", Pento 360 has a hole for mounting on a screw or magnet included in the delivery package.

HIGH RELIABILITY. Laser level XLiner Pento 360 has a shockproof and waterproof housing, providing IP54 protection rating.

THANKS TO BUILT-IN BLUETOOTH and original CONDROL application, the user can control the laser level remotely using a smartphone or a tablet.

The application allows:

- select required mode of operation: switch on / off laser emitters, pulse mode;
- adjust the laser power to save the battery power;
- monitor the battery charge level.

Standard package: laser level, pouch, target, user manual.



Working Range/ with Receiver, m:	20/60
Accuracy, mm/m:	± 0,1
Self-Leveling Range °:	5



Dimensions: 141x100x139 mm Weight: 870 g





Cross Line Laser XLiner series

CONDROL XLiner Pento 360 G – is a new generation laser level, capable of making a 3D layout of the room thanks to a 360° laser emitter.

Pento 360 G allows you to solve a wide range of tasks: installation of partitions, wallpapering, tile laying, etc. The brightness of the green laser is 4 times higher than the red one, which increases efficiency of laser level operation in bright sunlight.

GREEN LASER. XLiner 360 G is equipped with a 520 nm green laser, which is 4 times brighter than the red one with the same emitter power. This feature allows you to use the level equally efficiently indoors and at outdoor construction sites.

HIGH PROTECTION RATE. A shock-resistant rubberized housing, reliable protection against moisture, dust and dirt make it possible to use XLiner Pento 360 G not only indoors, but also on outdoor building sites at any time of the year.

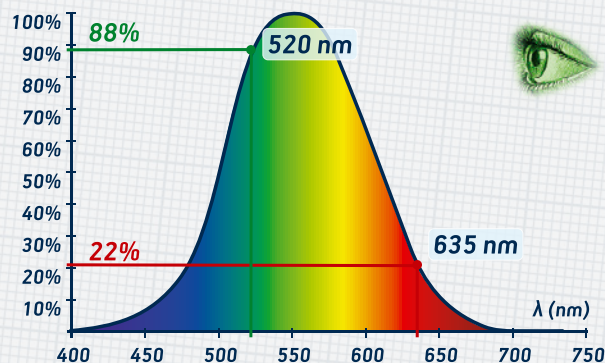
Standard package: laser level, pouch, target, user manual.

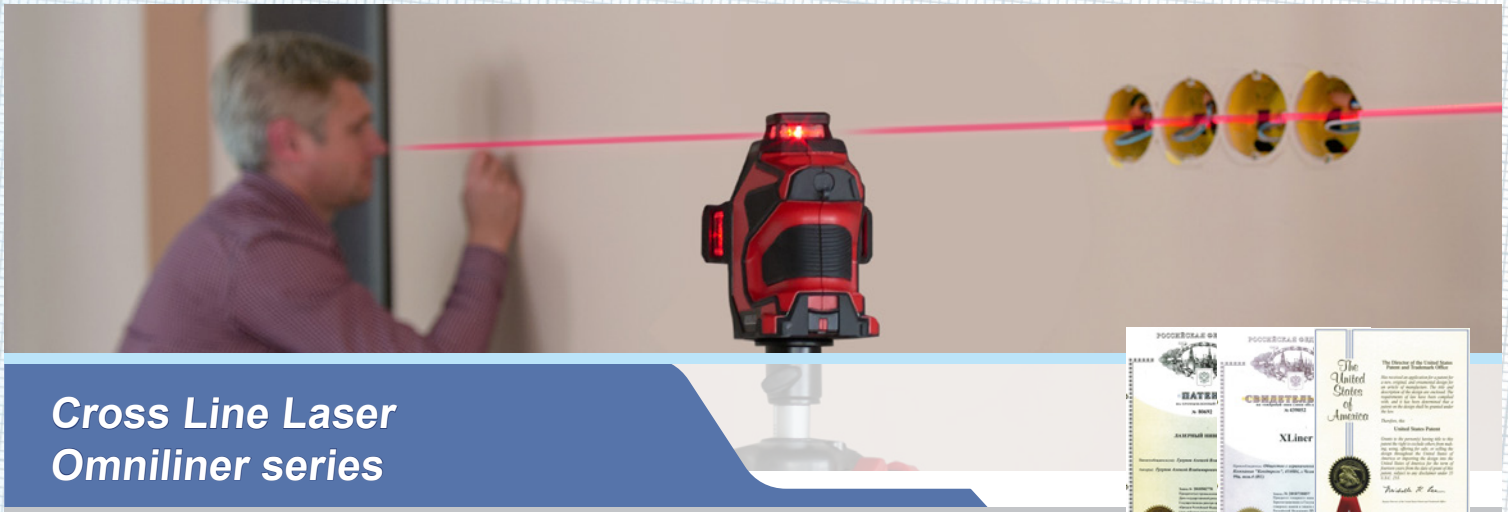


Working Range/ with Receiver, m:	20/60
Accuracy, mm/m:	± 0,1
Self-Leveling Range °:	5



Dimensions: 141x100x139 mm Weight: 870 g





Cross Line Laser Omniliner series

Omniler 3D – a professional laser level capable of building two vertical and one horizontal plane with a 360° fan angle. High IP protection rate, shockproof housing and a wide range of functions provide a possibility to use the level both indoors and on outdoor construction sites.

3D LAYOUT. Omniliner 3D projects three orthogonal laser planes with a 360° fan angle. Intersection of two vertical planes forms plumb laser dots (zenith and nadir). Using the button for consecutive switching the lines on or off you can choose the most convenient mode of operation.

IP 65 PROTECTION. The housing of the laser level is reliably protected from dust, moisture and dirt, so it can work in the harsh conditions of the construction site in any weather. No other laser level by other brands can boast of such high IP rate.

FALL PROTECTION. The laser level Omniliner 3D differs from its competitors by its shock-resistant construction, which reliably protects it from drops from 1m height. Embossed rubber inserts provide a secure grip and won't let the laser level slip out of your hands during installation.

PROJECTION OF INCLINED PLANES. Thanks to the possibility to lock the compensator, it is able to project lines at any tilt angle. Tilt mode is useful for installation of stair railing or decorating the walls.

HIGH-CAPACITY BATTERY. Unlike its competitors, CONDROL Omniliner 3D is equipped with a powerful rechargeable battery (Li-ion 4500 mAh), which provides long battery life. There's no need to buy a set of batteries every time. Just charge the battery and get back to work.



Working Range/ with Receiver, m: 20/60

Accuracy, mm/m: ± 0,2

Self-Leveling Range °: 5

Dimensions: 139x131x109 mm Weight: 650 g



Standard package:
Omniler 3D laser, pouch, charging cable, user manual, color box.





Cross Line Laser Omniliner series



Omniliner G3D – a multifunctional laser level, able to project with a 360 ° laser plane, with automatic compensation of the tilt and the function of projecting inclined planes. The laser level projects two vertical and one horizontal planes. A combination of these functions, supplemented by green laser radiation, allows you to maximize the use of Omniliner G3D in the premises and on open construction sites. The technical solutions used in the Omniliner G3D are protected by RF patent No. 93896.

DUST AND MOISTURE PROTECTION IP 65. Unlike analogs, Omniliner G3D has a high level of dust and moisture protection, which makes it possible to use the laser level both outdoors and in the harsh conditions of the construction site.

SHOCKPROOF HOUSING. Another competitive advantage of the Omniliner G3D is its shockproof design. No need to worry about the performance and accuracy of this laser level, even if it accidentally falls from a tripod.

Green laser. Omniliner G3D is equipped with a green laser with a wavelength of 520 nm, which is perceived 4 times brighter than red at the same power emitter.

GREEN LASER is clearly visible in sunlight, so the laser level works efficiently both indoors and outdoors.

PULSE MODE. Omniliner G3D CONDROL has a pulse mode that allows you to work outdoors at distance up to 100 m using the laser receiver by CONDROL.

LONG OPERATING TIME. Omniliner G3D CONDROL is equipped with a high-capacity Li-ion battery (4500mah), which significantly increases operating time of the device, eliminates the need to buy batteries, saves your time and money. None of the competitors can boast of such long battery life.

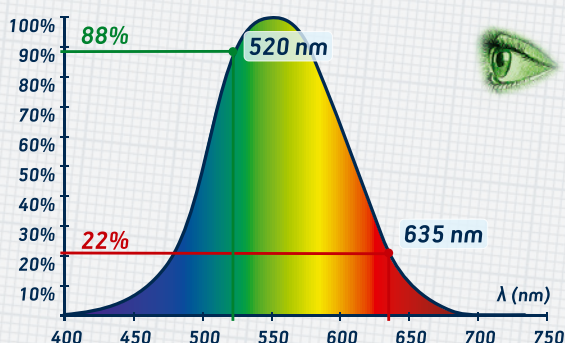


Working Range/ with Receiver, m: 20/60

Accuracy, mm/m: $\pm 0,2$

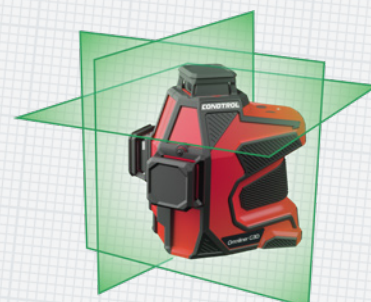
Self-Leveling Range °: 2

Dimensions: 139x131x109 mm Weight: 650 g



Standard package:

Omniliner 3DG laser, pouch, charging cable, user manual, color box.





ROTARY LASER LEVELS

Auto RotoLaser

The Auto RotoLaser is a high-precision laser level with a three-dimensional sensor providing automatic self-leveling and ability to work in three axes (X, Y, Z). This laser level is equipped with a laser plumb and self-levelling block function. The instrument is equipped with the remote control and a laser receiver enlarging the working distance up to 400 m. High class standard IP54 allows to use this laser level at outdoor building sites.

Advantages:

- Horizontal / vertical automatic leveling
- Adjustable rotation speed - 0/120/300/600 rpm
- Five scan sectors provide bright clearly visible lines
- Up and down laser dots
- Dust and waterproof housing

Green RotoLaser

Green version is available.

Set package:

Rotary laser, universal mount, batteries, battery charger, laser receiver, mount for laser receiver, remote control, laser intensive glasses, magnetic target board, user manual, packed in hard case.



Working Range, m:	400
Accuracy, mm/m:	± 0,15
Self-Leveling Range °:	5,0



Dimensions: 150x128x161 mm Weight: 1,4 kg

Super RotoLaser

Professional rotating laser level is equipped with a plumb dot and electronic sensor aligning in three axes (X, Y, Z).

It is operated by 8 buttons on the control panel and by remote control.

Super RotoLaser is equipped with step adjustment of the rotation speed, scan sector function and integrated sensor with ability to set a ±10° tilt. Laser receiver included in the set extends the working range up to 500 meters.

High class standard IP54 allows to use this laser level at outdoor building sites.

Set package:

Rotary laser, batteries, reserve battery unit, battery charger, laser receiver, mount for laser receiver, laser intensive glasses, magnetic target board, remote control, user manual, packed in hard case.



Working Range, m:	500
Accuracy, mm/m:	± 0,1
Self-Leveling Range °:	5,0



Dimensions: 160x160x185 mm Weight: 2,1 kg



OPTICAL LEVELS

Thanks to the pendulum system with magnetic damping, the working range of the compensator comes up to $\pm 15'$. Optical levels 24X/32X CONDROL ensure fast and precise measurements, with standard deviation of 2 mm per 1 km. 24X/32X CONDROL feature multi-coated optics for easier targeting and clear visibility. Optical levels 24X/32X are equipped with a horizontal limb with 1° increment, fine adjustment screw and optical viewfinder with a pointer for convenient targeting.

Set package:

Automatic Level, plumb, calibration tools, user manual, packed in blow molded case.



24X



32X

Automatic Level	24X	32X
Standard Deviation per 1 km Double-Run Levelling:	2 mm	2 mm
Telescope		
- Image	Erect	Erect
- Zoom	24x	32x
- Min Focusing Distance	0.5m	0.5m
Compensator		
- Type	Magnetic	Magnetic
- Working Range	$\pm 15'$	$\pm 15'$
Weight	1.8 kg	1.8 kg
Dimensions	128x192x134 mm	128x192x134 mm

Digital Theodolite iTeo CONDROL

Introducing a trendsetting theodolite series iTeo CONDROL (2"/5"/10"). Theodolites iTeo CONDROL feature consistently high quality and ease-of-operation. Even a non-professional can operate the instrument. Laser plumb beam for fast and accurate self-alignment, 2 illuminated LC-displays for indicating horizontal and vertical angles, the theodolites ensures high precision measurements.

An integrated digital compensator provides vertical alignment within $\pm 3'$. For greater convenience, the vertical angle index is available in degrees or slope percentage.

Package includes: iTeo CONDROL, calibration pin, tool bag, plumb bob, flannel cloth, brush, screwdriver, battery compartment, charger, user manual, packed in blow molded case.

Telescope

Length	155 mm
Aperture	45 mm
Zoom	30x
Image	Erect
View Angle	1°30'
Resolution	3.5"
Min Focusing Distance	1.3 m
Stadia Constant	100
Intercept Point	0

Digital Angle Measurement

Method	Incremental
LC-display	Dual
Accuracy (Standard Deviation)	2"/5"/10"
Circle Size	71 mm

Light Source

LC-display	yes
Graticule	yes

Data Transmission

EDM Interface	yes
Data Import/Export Interface	yes

Level Sensitivity

Plate Level	30"/2 mm
Circular Level	8"/2 mm

Power Supply

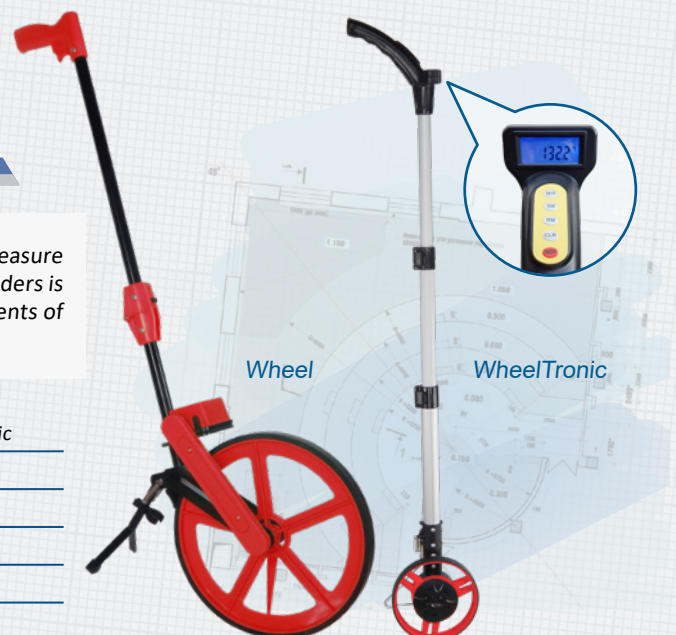
Operating Time	24 h
Operating Temperature	-20°...+50°C
Battery Type	1500 mA
Dimensions	160x190x324 mm
Weight	4,8 kg



Wheel und WheelTronic CONDROL

Using measuring Wheel and measuring WheelTronic by CONDROL you measure distance without mistakes, even when using of measuring tapes or range finders is not possible or irrational. Measuring wheels are widely used for measurements of sections of roads, forests, railways, etc.

	Wheel	WheelTronic
Type	Disk	Disk
Measuring Range	0 - 999,9 m	0 - 999,9 m
Wheel circumference	0,1 m	0,1 m
Accuracy	$\pm 0,1\%$	$\pm 0,1\%$
Weight	1,4 kg	0,7 kg



Wall Detector Scan Pro

Scan Pro is a scanner designed to search for hidden in drywall and wood constructions utilities:

- Pipes (plastic, reinforced plastic, copper, steel),
- Steel and wooden wall frames,
- Electric wiring.

The device features four scan modes indicated on a wide illuminated LC-display. Scan Pro produces both sound and visual signals as soon as it identifies not only edge but the center of a hidden structure. For greater convenience, having detected a hidden structure, the device projects a beam which defines its exact location. Therefore, you can scan through an entire wall and visualize all hidden utilities and structures.

Standard package:

Scan Pro, user manual, color box.



Detection Depth:	
Plastic, wood, copper	up to 40 mm
Steel	up to 100 mm
Electric wiring	up to 50 mm
Power Supply	1x6F22
Dimensions	189x83x38 mm
Weight	240 g

Drill Point Locator ExitPoint

Exit Point CONDROL – is a drill point locator, consisting of a transmitter and a receiver. It allows to precisely localize a hole entry or exit point before drilling in walls/floors/ceilings as well as to determine the thickness of walls/floors/ceilings for quick selection of a suitable drill bit.

Wide range of thickness measurement. Exit Point can be used for object with 300 –1200 mm thickness. It is possible to project the hole through the walls and through the floor or ceiling.

Measurement of wall thickness. Color indication is displayed on the receiver while searching for the exit point. Each color is equivalent to 300 mm. Thus, the device determines the approximate thickness of the wall, which helps to select the drill bit of required length.

Optional functions. The transmitter can be used separately as a metal detector, giving the opportunity to avoid unpleasant consequences associated with the damage of hidden engineering networks or getting into the steel bar.

Standard package:

transmitter, receiver, adhesive paste, batteries, hard case, user manual.



Wall/ceiling thickness measurement range	300-1200 mm
Maximal metal detection depth	100 mm
Batteries	2x9V 6F22/6LR61
Transmitter dimensions	120x80x26 mm
Receiver dimensions	198x60x32 mm
Transmitter weight	142 g
Receiver weight	190 g

Moisture Meter Hydro

The moisture meter Hydro-Tec is designed for rapid measurement of moisture content of wood and building materials (concrete, screed). The principle of operation of the moisture meter is based on correlation dependence of the dielectric constant of the material on its moisture content at positive temperatures. The device allows you to accurately measure the moisture content in wood ranging from 2% to 65% at a depth up to 20 mm. Despite its miniature size, the moisture meter has a menu with a list of dependencies in nine groups, including 20 types of wood: spruce, poplar, aspen, pine, linden, alder, cedar, larch, cherry, walnut, elm, ash, maple, birch, teak, beech, pear, yew, oak, hickory. Moisture meter HYDRO-Tec CONDROL is an excellent solution for those who need a professional high-quality instrument for measuring the moisture content of wood and building materials.

Standard package: Hydro, pouch, battery, user manual, packed in color box.

Working Range	0.1-65%
Accuracy:	
2....10%	0.8%
10....20%	1.0%
10....65%	2.5%
over 65%	not rated
Measuring Depth	up to 25 mm
Wood density range	420-700 kg/m ³
Concrete density range	1400-2400 kg/m ³
Operating Time	10h
Power Supply	2xAAA
Dimensions	110x43x26 mm
Weight	75 g



Moisture Meter Hydro Pro

CONDROL Hydro Pro – a moisture meter, which allows to determine humidity level in wood and building materials within a few seconds. Its operation is based on the conductance-measuring method according to GOST 16588 and GOST 21718, which determines the moisture content of materials based on their conductivity. The main difference from the analogs is that Hydro Pro CONDROL has three humidity sensors, as well as the ability to connect an additional remote sensor to measure relative humidity and air temperature, dew point and equilibrium moisture content of wood.

The main advantages of Hydro Pro:

- three humidity sensors
- the ability to connect the external temperature and humidity sensor
- the measurement does not damage the surface of the material
- built-in calibration dependencies
- rechargeable batteries
- 320x240 pixels color display

The moisture meter Hydro Pro is an excellent solution for those users who need a professional, high-quality instrument for measuring the moisture content of wood and building materials. It will be useful for builders, woodworkers, joiners and will be a reliable assistant in the work of: woodworking plants, parquet factories, furniture factories, laminated lumber factories, molded products, window and door factories, panel furniture factories and many other enterprises.

Humidity measuring range/accuracy:	
Wood and woodworks	2.0-65.0% / ±1,5-3,0%
Screed	0.1-35.0% / ±1,5%
Heavy concrete	0.1-10.0% / ±1,5%
Dimensions	150 x 59 x 28 mm
Weight	170 g



Standard package:
Hydro Pro, pouch, hand strap,
user manual, batteries, micro-USB
charger, color box.

Coating Thickness Gauge PAINT Pro

MAGNETIC & NON-MAGNETIC

New coating thickness gauge **CONDROL PAINT Pro** join two principles of measurement: magnetic induction and eddy current.

This allows to measure thickness of paint or coating on magnetic and non-magnetic metallic materials.

ON-SITE or IN LAB

PAINT Pro is particularly suitable for control of anodizing or galvanizing coating in machinery and automotive industry.

It can be used at production facility for inspection of incoming materials, manufacturing processes, control of finished products, as well as for expert assessments in the laboratory and in the fields.

DATA TRANSFER

Measurements results can be transferred to a PC via the USB-interface.

EASY CALIBRATION

Calibration plates with sample films are included into package for calibration and measurements accuracy verification.



Operating mode	Single and Continuous measurements
Memory	320 measures
measuring range	0 - 1300 μm
Accuracy	3% +2 μm
resolution	1 μm (0...999 μm), 0,01 μm (≥ 1000 μm)
PC interface	USB
Dimensions	112x51x28 mm
Weight	80 g

Standard package:
PAINT Pro, calibration kit, batteries, strap,
micro-USB cable, manual, color box.

Concrete Strength Tester Beton Pro

Concrete strength tester **BetonPro CONDROL** is designed for on-site and laboratory testing of concrete strength and homogeneity.

The instrument is equipped with a new sclerometer, providing greater accuracy and ease of use, with increased impact energy, providing automatic arming of percussion mechanism, when installed on the test surface. The age of the concrete, its composition and hardening conditions do not effect the result reliability. Display menu allows precise instrument adjustment to the material to visualize and systematize information.

Beton Pro features:

- 100 calibration curves include specification of material, the hardening conditions, age of the concrete;
- Adjustment of the impact direction in 5 directions(0°, 45°, 90°, 135°, 180°);
- Ability to assign the measurement characteristic (plate, column, girder, beam, etc);
- Bar chart information performance with calculation of standard deviation and coefficient of variation, possibility to from the calculations of the any intermediate values;
- 5000 measurements memory;
- Criteria choice for sorting of the memory array;
- Ability to change rejection criteria;
- Interface for PC communication.

Standard package:

the electronic unit Beton Pro, sclerometer, solids measurement Equivalent measure strength, Emery stone, USB connection Cable, PC Software for data transmission and processing.



Solids measurement range	from 3 to 100 MPa
Accuracy	< 7%



Infrared Thermometers Maxwell series

A series of professional infrared thermometers Maxwell combines more precise, more advanced, high protection instruments. Infrared thermometer Maxwell makes it possible to quickly measure the temperature of objects, which is difficult or dangerous to measure by contact, as well as areas at risk for mold formation. Professional infrared thermometers CONDROL Maxwell will be useful for the workers of the housing and communal service as well as electric power industry, car service, construction organizations, DIYers.

CONDROL Maxwell 3 is an infrared thermometer, designed for non-contact measurement of temperature of the object surface in the range from - 30 °C to 380 °C. It has a sufficient optical resolution (12: 1), giving the possibility to carry out diagnostic measurements of dangerous, moving, hard-to-reach distant objects in less than one second by the touch of the trigger. There is a laser pointer for precise aiming at the object of measurement. Ergonomic design, shock-resistant housing and intuitive interface guarantee fast and comfortable measurements.

CONDROL Maxwell 4 is an infrared thermometer, designed for non-contact measurement of temperature of the object surface in the range from -30 °C to 550 °C. It can be used to quickly determine the area of heat leakage, «cold bridges», the place of potential mold formation, blockages in the heating system, overheating of contact groups and moving parts in cars and mechanisms. Intuitive interface, laser pointer make Maxwell 4 easy to use. Just one click on the button – the result will appear on the display.

Standard package:
infrared thermometer, batteries, user manual.



INFRARED THERMOMETER

	Maxwell 3	Maxwell 4
Measuring range of surface temperature	-30...380 °C	-30...550 °C
Measuring range of ambient temperature	-	-10°C... 60°C
Measuring range of relative humidity	-	0% ...100%
D:S ratio	12:1	12:1



Thermal Imagers IR-CAM series

The **IR-CAM thermal imagers series** are designed for primary tasks in thermal imaging diagnostics, such as wall inspection, scanning of windows and buildings for heat loss, electrical equipment overheating monitoring, heat-insulated floors, heating and ventilation systems, when thermal control is required. Images can either be stored on a removable SD-card or internal memory or transferred to a PC via the USB-interface.

The compact and handy imagers are ideal for electricians and energy maintenance inspection technicians. IR-CAM proves efficient and time-saving when inspecting heat insulation, heating systems or running a power inspection prior to signing the test certificate.



THERMAL IMAGER:	IR-CAM 1	IR-CAM 2	IR-CAM 3	IR-CAM 4
Working range	-20...1000°C	-20...300°C	-20...250°C	-20...350°C
Accuracy	±2% / ±2°C	±2% / ±2°C	±2% / ±2°C	±2% / ±2°C
Field angle/shortest focal distance	33°x33°	20°x 20°	33°x33°	25°x19°
IR-Resolution	32x32 pix	80x64 pix	120x120 pix	160x120 pix
Camera	Resolution 320x240 pix	Resolution 640x480 pix	Resolution 240x320 pix	Resolution 640x480 pix
Display	Color LCD, 5,08 cm	Color LCD, 6,1 cm	Color LCD, 8 cm	Color LCD, 8,89 cm
Operating temperature	0...50°C	0...50°C	-15...50°C	-15...50°C
Storage temperature	-40...70°C	-40...70°C	-25...60°C	-25...60°C
Relative humidity	<90%	<90%	<90%	<90%
Dimensions	217x63x50 mm	217x63x50 mm	240x86x132 mm	285x110x220 mm
Weight	230 g	230 g	485 g	1100 g
Power supply	3,7V 2500mAh Li-ion	Rechargeable Li-ion battery	Rechargeable Li-ion battery	7,4V 2600mAh Li-ion

ACCESSORIES

Wall Mount / Wall Mount Pro

Universal mount for CONDROL laser levels. Specially designed for mounting laser levels on the wall or building profile. For this purpose there are two powerful magnets and a screw-mounting hole at the rear part of the Wall Mount CONDROL.

Universal wall mount for CONDROL laser levels is equipped with micro lift for fine height adjustment of the leveling axis.

Wall Mount CONDROL transforms into 3 different positions:

- Transportation
- Wall mounted
- Mini tripod

Additionally, it is possible to use XLiner and UniX cross line lasers in mini tripod position for the marks transferring from the floor to the ceiling, as Wall Mount let plumb dots go straight through and do not create the shadow or obstacles for the laser beam.

Features:

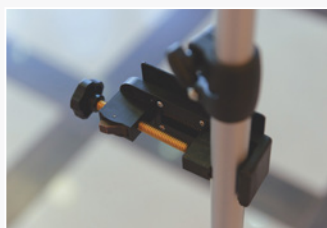
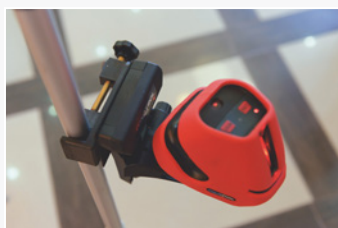
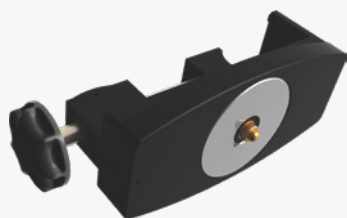
- Easy to mount on the wall on a screw
- Easy to fix on metal surface by built-in magnets
- Easy to transform into mini tripod
- Fine height adjustment
- Quick, easy and gentle fixing on vertical and horizontal surfaces
- Fits all laser instruments with both 1/4" and 5/8" tripod thread.

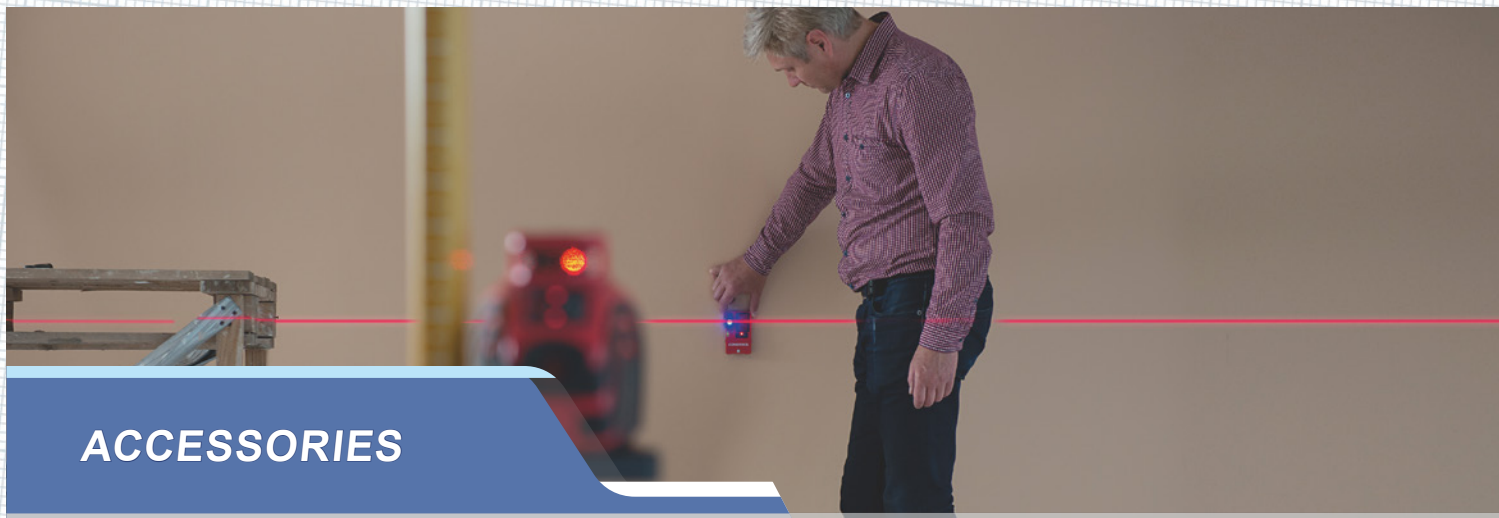
Wall mount for laser levels CONDROL Wall Mount Pro has a horizontal limb with a micrometer screw for smooth and precise pointing of the vertical line (angle adjustment). It can also be used for quick construction of vertical lines.



Clamp

This universal mount for CONDROL laser levels can be fixed on any building construction or interior item. Clamp CONDROL can be fixed on the window sill or on the table, on the heating pipe or on a building profile with a girth up to 50mm.





ACCESSORIES

Reflector

Reflector CONDROL for laser distance meters increases a measurement distance of the laser distance meters by improved reflective properties of the plate.



Original electronic target

CONDROL original electronic target increases working range of XLiner series up to 100 meters. Original double-sided design allows to use it both indoors and outdoors.

It's possible to monitor laser axis visually by scale at reflective surface on the backside or by sensors with LED indication on the front side. CONDROL original electronic target is equipped with magnet on the top, so, it can be easy fixed on the ceiling profile for fast and convenient level adjustment.



Laser intensive glasses

On a sunny day, a laser beam may be barely recognizable. For distances up to 15 m, we recommend to use our laser glasses, which makes laser beam and point better visible.



RotoBase

Designed for CONDROL laser levels, it provides slow rotation and ensures accurate vertical plane alignment for projecting horizontal laser lines and transferring horizontal points from one wall to another. RotoBase has a horizontal limb with degree index, fine adjustment wheel and vial. Its legs height is adjustable and makes surface slope compensation possible, thus the self-levelling range increases up to 10°.



ACCESSORIES

H150

Compact, telescopic tripod with a maximum height up to 150 cm. It is perfect for aiming laser distance meter when taking long distance measurements.

This tripod with a 5/8" thread is supplied with a quick-release plate with 1/4" thread.



H190

Tripod for laser levels with an elevating head. Maximal tripod height is 190 cm. The tripod differs from analogues by its central section having both infinite height adjustment and rotating base for transferring horizontal marks to opposite walls. Inner tripod tube is hollow, that allows to project laser plumb.



GEO

Aluminum expanding tripod with a flat area for laser levels and theodolites. Firm legs fixation with clamp screws. Stave screw with a 5/8" thread.

Light and durable material makes the tripod relatively lightweight as well as the shoulder strap ensures easy portability.



TS3, TS4, TS5

Telescopic aluminum leveling pole TS3 is popular among surveyors, cartographers, and builders.

The millimeter scale on reverse side widens application possibilities, whereas the small size and light weight make them easy-to-use and portable. The standard set can be completed with a pouch and a vial. Length of the leveling pole is 3 m. 3m, 4m, 5m leveling poles are available.





ACCESSORIES

GEO XL

Elevating tripod GEO XL is made for mounting laser levels and rotary laser levels at height from 128 to 310 cm. Its adjustable column allows you to move the instrument up or down for precise installation of the horizontal laser plane. When you unlock elevating mechanism, lowering of the equipment goes slowly thanks to pneumo mechanism built in the lift.

The tripod help the process of layout and installation for suspended and stretch ceiling, wall constructions, ceiling beams and inserted floors. Elevating tripods allow you to work from different points of the room (especially while ceilings layout and you have to place the laser instrument at the same height in complex geometry construction sites) with the possibility to quickly change the position of the laser instrument.



Pillar

Telescopic pole with a tripod stand Pillar CONDROL consists of a telescopic pole and a tripod stand. The pole has several sections, one of them is a sliding one, and reinforced movable platform with a 5/8" thread, which allows setting of the laser level at certain height. Wide platform base provides a secure fixing of the laser level.

A pole with a tripod stand Pillar can be fixed in 2 positions:

- between the floor and the ceiling without a tripod stand;
- with a tripod stand.

Pillar CONDROL bar is made of aluminum. Minimum height is 1 m, maximum height is 3.66 m. Thanks to the folding design, this accessory is easy to store and transport.



CONTACTS:

CONDROL GmbH
Wasserburger Strasse 9
84427 Sankt Wolfgang
Germany
T: +49(0)8085-1893405
F: +49(0)8085-1893407
www.condtrol.com

*We reserve the right to make changes in color and design as well as technical improvements.
All data without guarantee.*